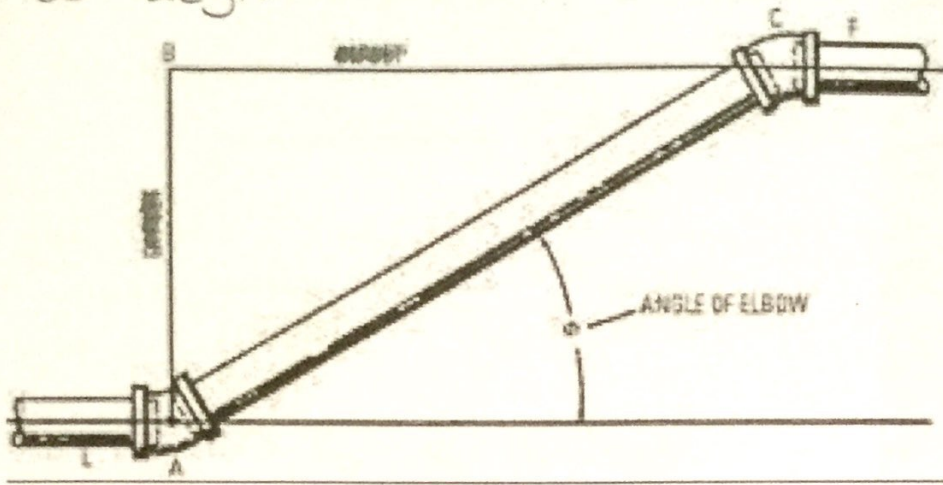


Plumbers Help Guide Examples

30° degree

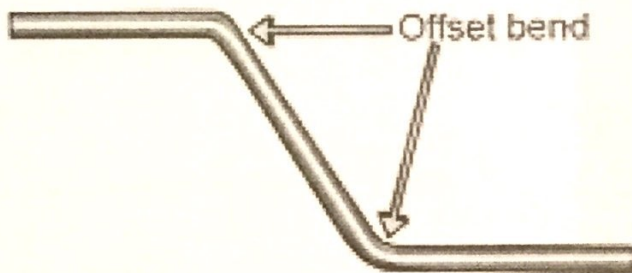


set = _____

advance = 18 1/4"

travel = _____

60° degree

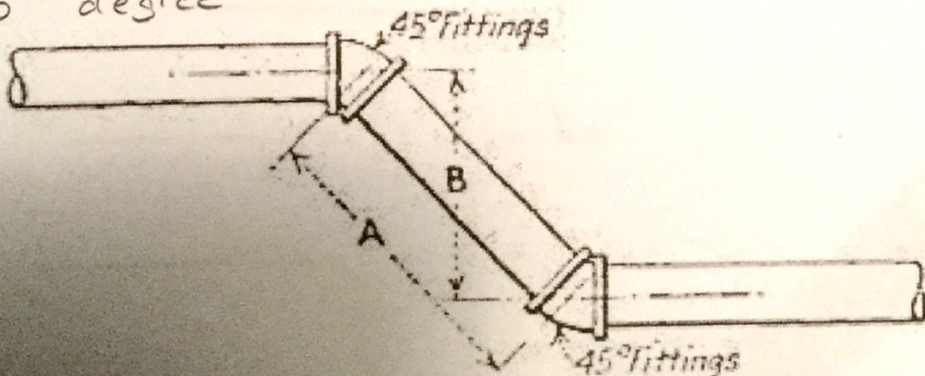


set = _____

advance = _____

travel = 14 1/2"

45° degree

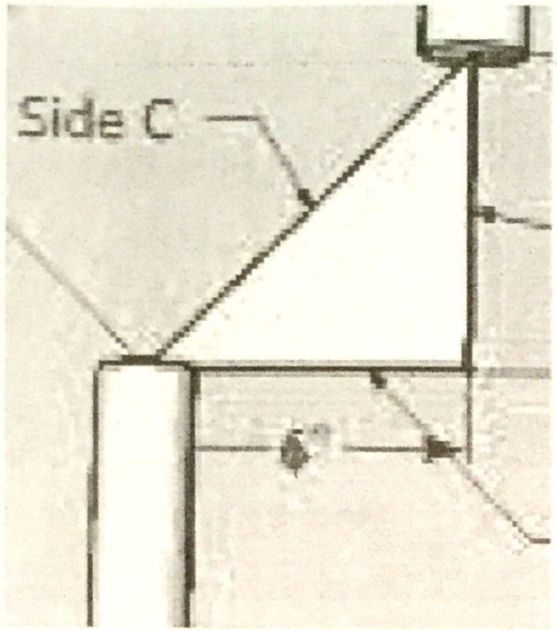


set = _____

advance = _____

travel = 20 7/8"

45°



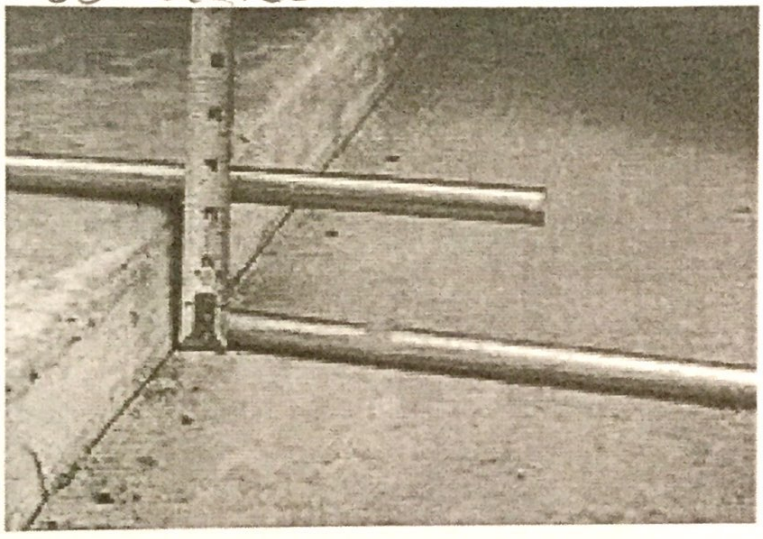
set = _____

advance = _____

travel = 16"

Special or guide?

30 degree



set = _____

advance = 12"

travel = _____

Special or guide?

60 degree



set = 17 1/4"

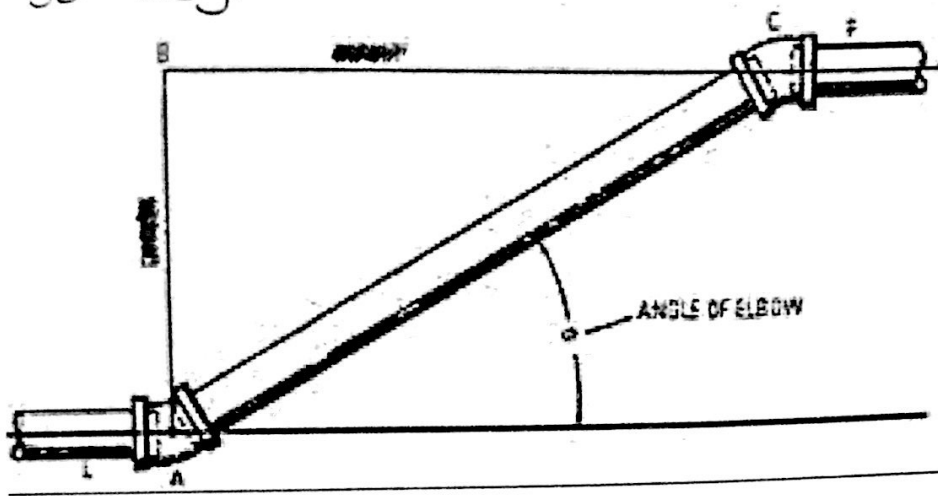
advance = _____

travel = _____

Special or guide?

Plumbers Help Guide Examples

30° degree

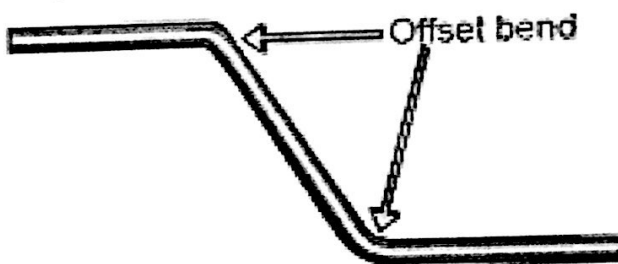


$$\text{set} = \frac{18.25 \cdot .5774}{21.07} \text{ or } 10\frac{1}{2}''$$

$$\text{advance} = 18\frac{1}{4}''$$

$$\text{travel} = \frac{18.25 \times 1.1547}{21.07} \text{ or } 21''$$

60° degree

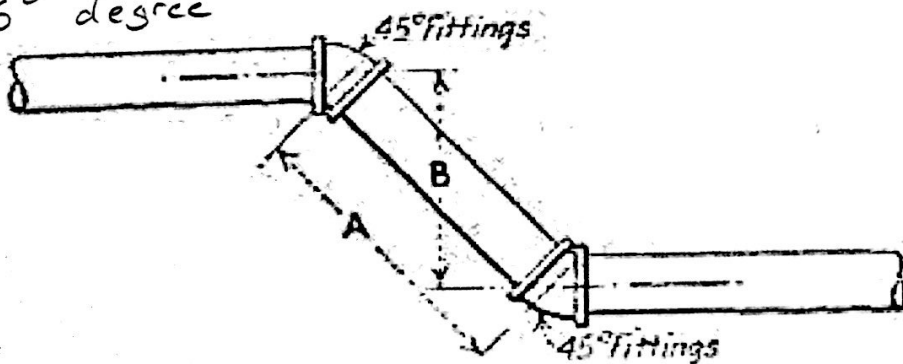


$$\text{set} = \frac{14.5 \cdot .866}{12.56} \text{ or } 12\frac{1}{2}''$$

$$\text{advance} = \frac{14.5 \cdot .5}{7.25} \text{ or } 7\frac{1}{4}''$$

$$\text{travel} = 14\frac{1}{2}''$$

45° degree

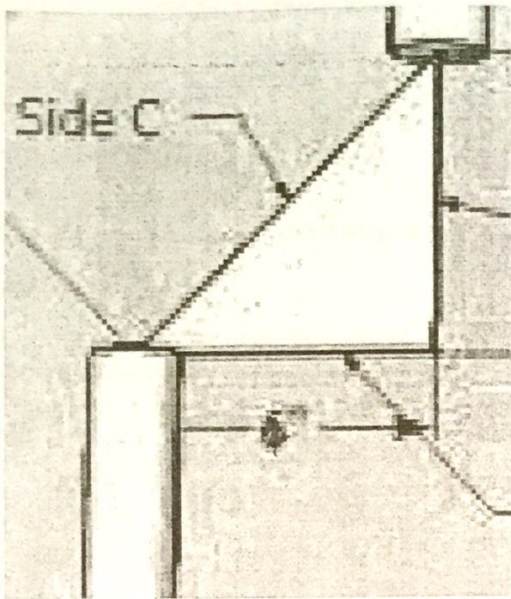


$$\text{set} = \frac{20.875 \cdot .7671}{14.8} \text{ or } 14\frac{3}{4}''$$

$$\text{advance} = 14\frac{3}{4}''$$

$$\text{travel} = 20\frac{7}{8}''$$

45°



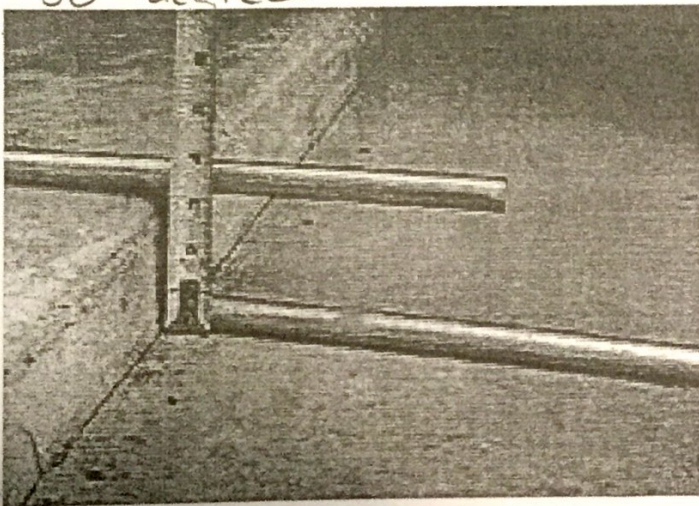
$$\text{set} = \frac{16}{\sqrt{2}} = 11\frac{3}{8}''$$

$$\text{advance} = \underline{11\frac{3}{8}''}$$

$$\text{travel} = \underline{16''}$$

special or guide?

30 degree



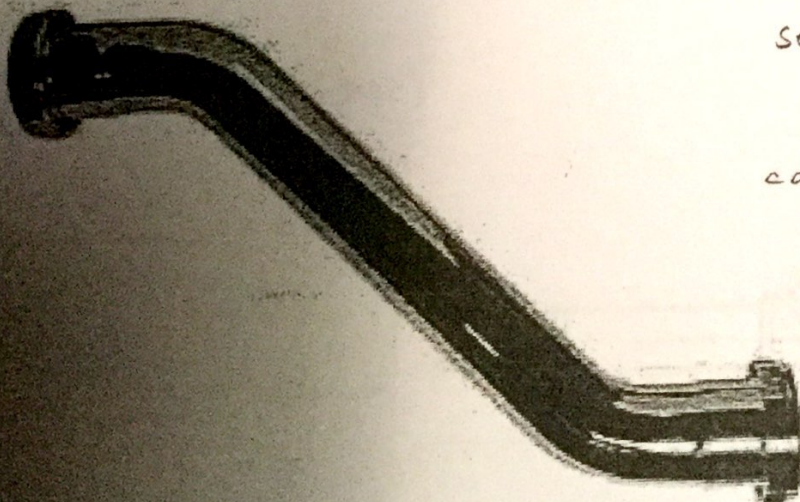
$$\text{set} = \frac{12}{\sqrt{3}} = 6.9 = 6\frac{7}{8}''$$

$$\text{advance} = \underline{12''}$$

$$\text{travel} = \underline{6\frac{7}{8} \times 2 = 13\frac{3}{4}''}$$

special or guide?

60 degree



$$\text{set} = \underline{17\frac{1}{4}''}$$

$$\text{advance} = \frac{17.25}{\sqrt{3}} = 9.95 = 10''$$

$$\text{travel} = \underline{20''}$$

special or guide?