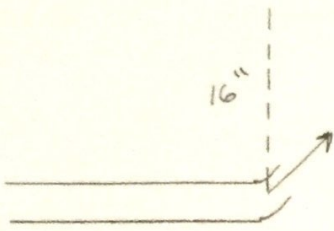
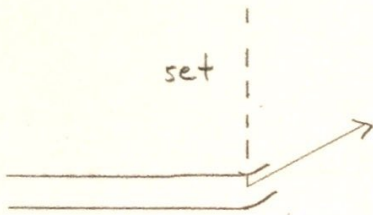


GIC Mock Plumbing Trials

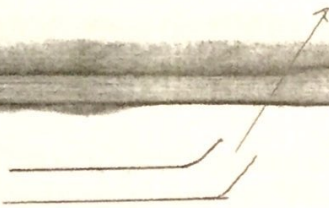
1) Create the travel of a 45 degree single pipe offset with a set of 16"



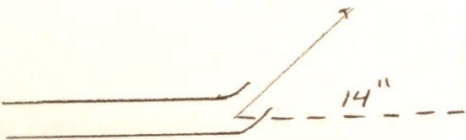
2) Create the travel of a 30 degree single pipe offset with a set of 24"



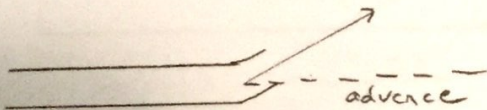
3) Create the travel of a 60 degree single pipe offset with a set of 30"



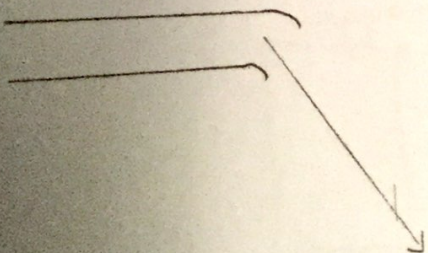
4) Create the travel of a 45 degree single pipe offset with an advance of 14"



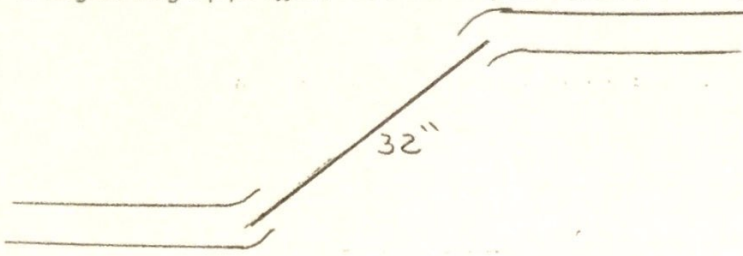
5) Create the travel of a 30 degree single pipe offset with an advance of 25"



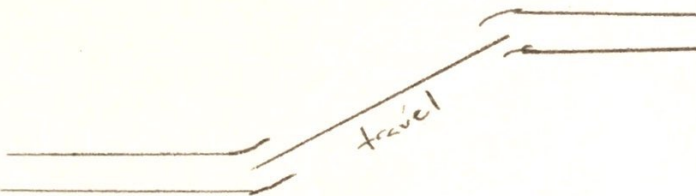
6) Create the travel of a 60 degree single pipe offset with an advance of 15"



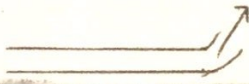
7) A 45 degree single pipe offset has a travel of 32", what is the length of the set?



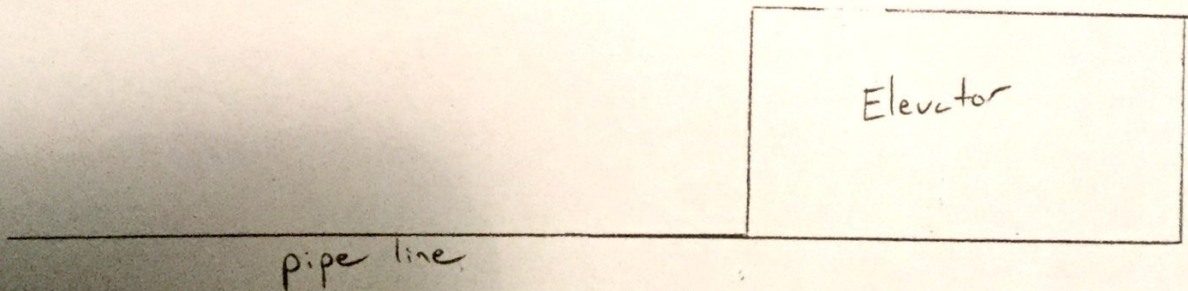
8) A 30 degree single pipe offset has a travel of 13", what is the length of the set?



9) A 60 degree single pipe offset has a travel of 22", what is the length of the set?

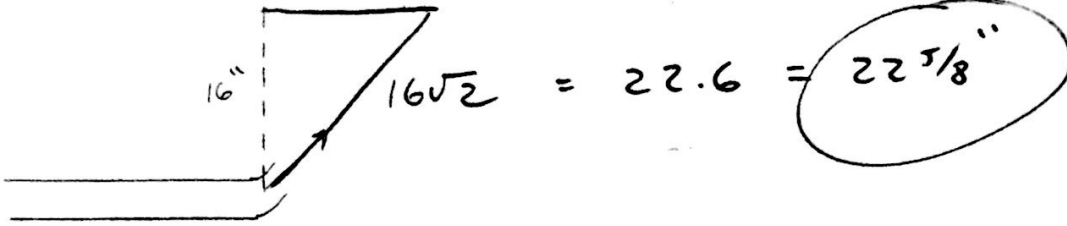


10) The diagram below shows the path of a pipe line in a building. Because of an elevator shaft, the pipe line needs to be rerouted around it. Draw a sketch an offset using your ruler, you decide which offset to use. The scale of the drawing is 2.5 feet per inch. Label your drawing with the actual measurements.

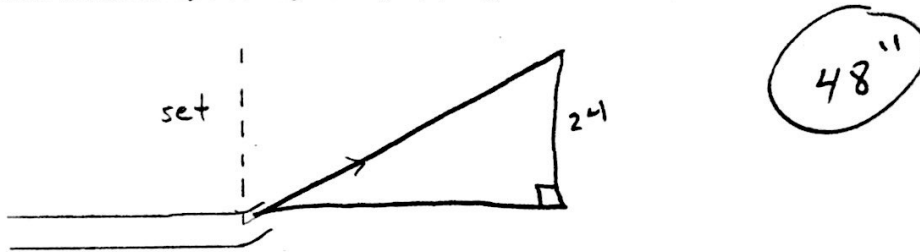


GIC Mock Plumbing Trials

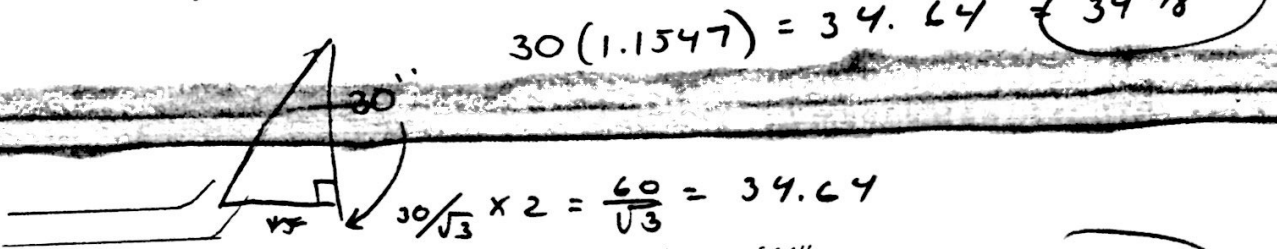
1) Create the travel of a 45 degree single pipe offset with a set of 16"



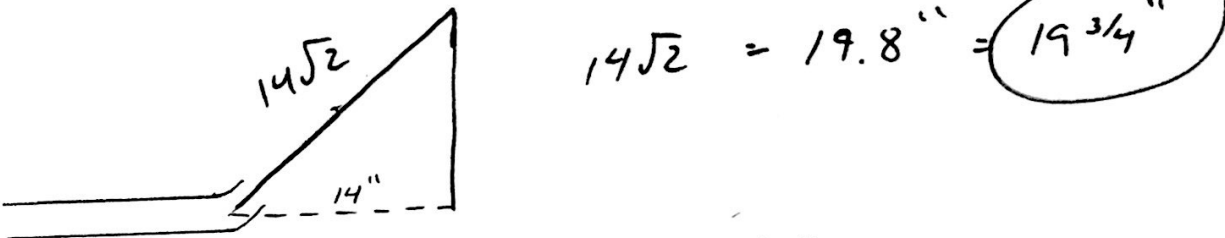
2) Create the travel of a 30 degree single pipe offset with a set of 24"



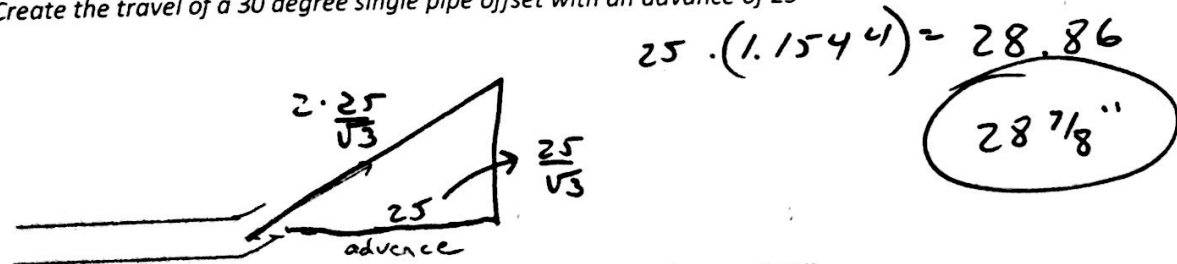
3) Create the travel of a 60 degree single pipe offset with a set of 30"



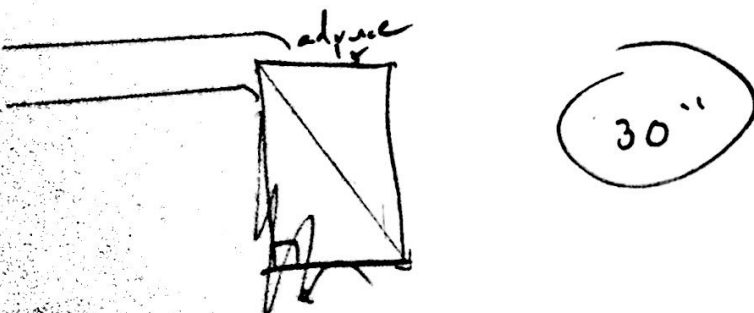
4) Create the travel of a 45 degree single pipe offset with an advance of 14"



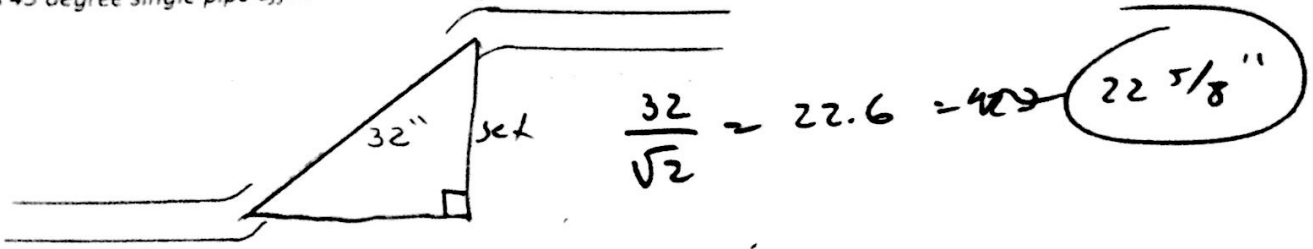
5) Create the travel of a 30 degree single pipe offset with an advance of 25"



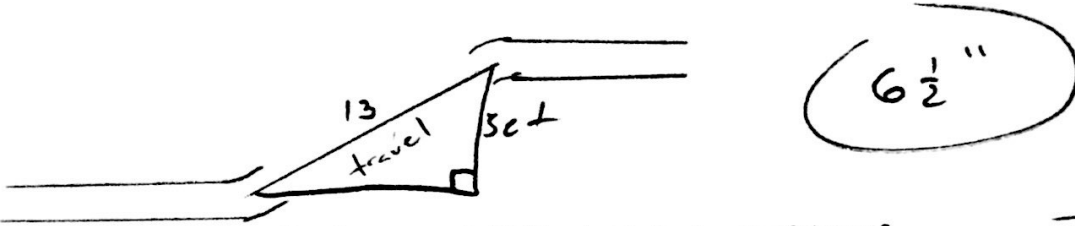
6) Create the travel of a 60 degree single pipe offset with an advance of 15"



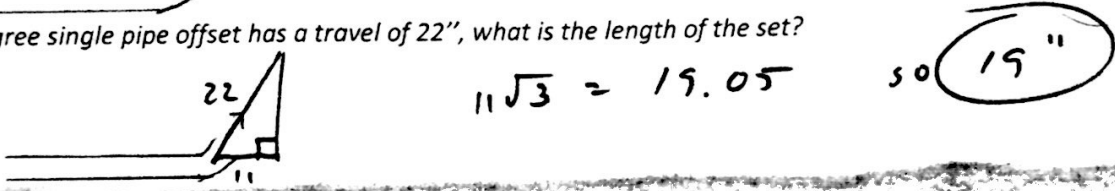
7) A 45 degree single pipe offset has a travel of 32", what is the length of the set?



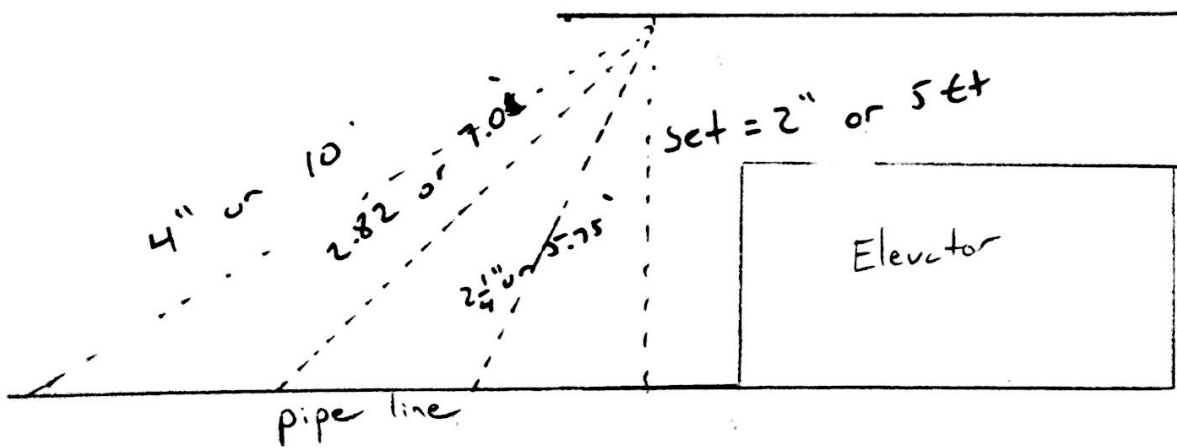
8) A 30 degree single pipe offset has a travel of 13", what is the length of the set?



9) A 60 degree single pipe offset has a travel of 22", what is the length of the set?



10) The diagram below shows the path of a pipe line in a building. Because of an elevator shaft, the pipe line needs to be rerouted around it. Draw a sketch an offset using your ruler, you decide which offset to use. The scale of the drawing is 2.5 feet per inch. Label your drawing with the actual measurements.



45°	30°	60°
2 · √2	2 · 2	2 (1.1547)
2.82"	4"	2.3094"
2 7/8"		2' 4"